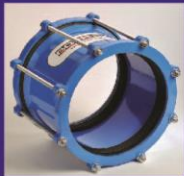




BORFLEX®



www.bortek.com

COUPLINGS

BORFLEX®



- Used safely in every type of pipes as steel, GRP, HDPE, PVC, pig, ductile font, ACP and etc...
- Production to test pressure PN40.
- Pipe is one-piece – lip seal dual-channels.
- Production to between DN25 - 4000mm.
- Body; AISI304, 316 or 1024 galvanized steel.
- EPDM, NBR, or VITON sealing material.
- Vacuum support part (optional)
- It affects both flex and compensator by providing flexible-link on pipes.

FLEX COUPLINGS - FLEX TYPE

DN25 - DN4000



FLEX-MK
(SINGLE PIECES)



FLEX-OK
(2-PIECES)



FLEX-BK
(3-PIECES)



FLEX-GK
(2 or 3-PIECES)

BODY WIDTH : 56-76-105-120-152-210-330-420 mm
PRESSURE : MAX 40 BAR (FOR MAX DN400)

REPAIR COUPLINGS - REP TYPE

DN25 - DN4000



REP-MK
HINGED



REP-OK
(2-PIECES)



REP-BK
(3-PIECES)



REP-GK
(2 or 3-PIECES)

BODY WIDTH : 56-76-105-120-152-210-330-420 mm

www.bortek.com

COUPLINGS

BORFLEX®

GRIP TYPE DN25-DN600 PLAST GRIP DN25-DN250



BODY : AISI 304 (Optional: AISI 316)
 SEALING : EPDM
 (Optional: NBR, VITON or SILICON)
 ANCHORING RING : AISI 301 (Plastgrip AISI 304)
 BODY WIDTH : 56 - 76 - 105 - 120 - 152 mm

PVC PIPE CLAMP

DN50 - DN200

PVCLAMP



BODY : AISI 304 (Optional AISI 316)
 LOCKING : AISI 304 (Optional AISI 316)
 SEALING : EPDM (Optional NBR)
 PRESSURE : PN4

WAFER TYPE CLAMPS

DN20-23 - DN510-530



SINGLE PIECES
EASY-20 S



DOUBLE PIECES
EASY-20 D

BODY : AISI 304 (Optional AISI 316)
 SEALING : EPDM (WAFER) (Optional NBR)
 BOLT&NUTS : AISI 304 (Optional AISI 316) with TEFLON
 BODY WIDTH : 100-150-200-250-300-400-500-600 mm



Wafer type clamps produce with welding automation.

STEM TYPE WAFER CLAMPS

DN70 - DN600

BORCLAMP



SIMPLE PIECES
ML-20 S



DOUBLE PIECES
ML-20 D

BODY : AISI 304 (Optional AISI 316)
 SEALING : EPDM (WAFER) (Optional NBR)
 BOLT & STEM : Dacromat - 500 coated steel
 (Optional AISI 304-316)
 BODY WIDTH : 100-150-200-250-300-400-500-600 mm

www.bortek.com

COUPLINGS

BORFLEX®

DIFFERENT PIPE COUPLINGS

OD1 ≠ OD2

BORSTEP



BORSTEP CUT-VIEW



BORSTEP COUPLING

BODY : AISI 304 (Optional AISI 316)
 SEALING : EPDM (Optional NBR)
 BODY WIDTH : 210 mm
 TOLERANCE : 20 mm (Optional 30 mm)

BRANCHMAN COUPLINGS - CLAMPS

BORFLEX-BR



STANDARD TYPE



SERVICE VALVE TYPE



WAFER TYPE



SADDLE TYPE

EXPANSION TYPE COUPLING

DN80 - DN4000



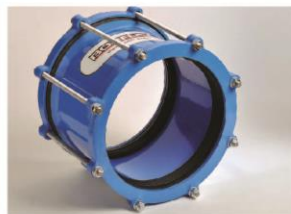
COUPLING : FLEX TYPE
 PRESSURE : PN6 - PN10 - PN16
 COUPLINGS WIDTH : 330 - 420 mm
 EXPANSION RATE : 150 mm

PIPE ADAPTOR

OD 90 - OD 600



SMALL TYPE



LARGE TYPE



FLANGED TYPE

BODY : ST37 steel
 (with Epoxy paint)
 FLANGE : GGG40 casting
 BOLTS&NUTS : Galvanized steel
 SEALING : EPDM (Optional NBR)

Optional Reducing Type

www.bortek.com

PIPE INSIDE REPAIR SYSTEM

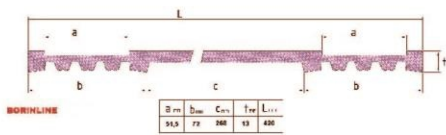
DN500 - DN4000

BORINLINE

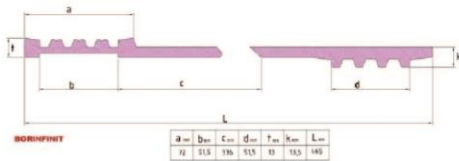


BORINLINE INSTALLATION PICTURE

- BODY : EPDM RUBBER
- TENSION BELTS : AISI 304 - (Optional AISI 316)
- TENSION APPARATUS : Investment casting stainless steel
- BOLTS : Allen head coupled hexagonal nut
- BOLTS : 12.9 quality steel (Optional AISI 304 or AISI 316)
- PRESSURE : PN16



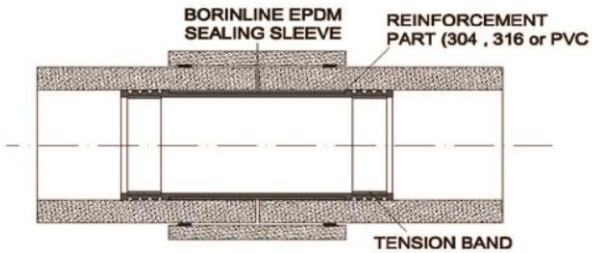
BORINLINE CUT-VIEW
WIDTH: 420 mm



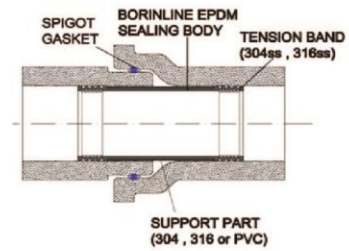
BORINFINIT CUT-VIEW
WIDTH: 465 mm



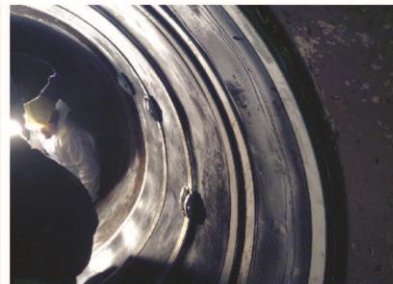
BORINLINE-BORINFINIT
(ADDING PARTS)



INSTALLATION PICTURE



INSTALLATION PICTURE



PIPE PLUG

BORTEK®



SMALL TYPE PLUGY DN40-300 mm

SMALL TYPE PLUGY WITH BY-PASS- DN40 – DN300 mm

LONG TYPE PLUGY- DN100 – DN1500 mm

LONG TYPE PLUGY WITH BY-PASS -DN100 –DN1500 mm BY-PASS DIA. 2" or 4"



Long type plugy



Hose 10 mt



Plugy control unit

PIPE JOING TEST

BORTEK®



Joining test unit for DN600 – DN3000 mm pipes.

Body: St 37 steel with epoxy paint.

Gasket: EPDM rubber

Test pressure: Water : 6 bar

Air: 3 bar

www.bortek.com

HDPE PIPE GRIPPING COUPLING

BORFLEX®



HDPE PIPE AXIAL COUPLING
DN100 – 1800 mm PN16-6
BODY: 304 or 316 GASKET: EPDM
LEFT AND RIGHT ANCHORING SYSTEM
EXCELLENT GRIPPING SURFACE (NO AXIAL
MOVEMENT)

new



REPAIR (2-PIECES BODY) SYSTEM
ANCHORING SYSTEM MAY BE TURN 360 degree

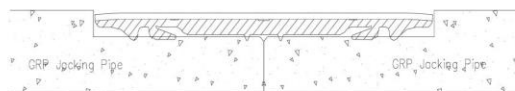
JACKING PIPE FOR GRP PIPE COUPLING

BORFLEX®



JACKING PIPE COUPLING USE TO GRP PIPE
FOR TUNNEL EXCAVATION
DN150-2000 mm and PN2 or PN6
BODY : 304 or 316Ti
GASKET: EPDM

new



JACKING PIPE COUPLINGS ARE CLOSE FIT ON THE GRP
PIPE .AND PLACING FIRMLY ON A PRIVATE SPACE
ON PIPE END.IT DOESN'T BE AFFECTED THAN PIPE
MOVED INTO THE TUNNEL.

www.bortek.com

SUB-SUBSTRUCTURES



MACHINE & PLANT WATER DISTRIBUTING



WASTE AND DRINKABLE WATER SYSTEMS



GENERAL WATER DISTRIBUTING



PIPE DIAMETERS

		PIPES (VARIOUS)				ASBESTOS PIPES								
DN	Inch	Steel	GRP	GG	DF	2.5 bar	5 bar	7.5 bar	10 bar	12.5 bar	15 bar	17.5 bar	HDPE OD	PVC OD
15	1/2"	21.3											20	20
20	3/4"	26.9											25	25
25	1"	33.7											32	32
32	1 1/4"	42.4											40	40
40	1 1/2"	48.3											50	50
50	2"	60.3											63	63
60				77		83	83	83	83	83			90	90
65	2 1/2"	76.1			82								110	110
80	3"	88.9		98	98	100	100	100	100	100	106	106	125	125
100	4"	114.3		118	118	120	120	120	120	126	132	132	140	140
125	5"	139.7		144	144	145	145	145	149	153	159	163	160	160
150	6"	168.3		170	170	170	170	174	176	182	190	194	180	180
175				196		197	197	201	207	213	219	223	200	200
200	8"	219.1	220	222	222	222	226	230	234	244	252	256	225	225
225				248									250	250
250	10"	273	272	274	274	274	276	284	288	298	306	310	280	280
275				300									315	315
300	12"	323.9	324.3	326	326	326	330	338	344	356	366	370	355	355
325				352									400	400
350	14"	355.6	376.1	378	378	378	382	390	400	414	426	430	450	450
375				403									500	500
400	16"	406.4	427.1	429	429	436	440	446	456	472	490	496	560	560
450	18"	473	473	480	480	488	492	500	512	526	546	550	630	630
500	20"	508	530.1		532	540	544	552	568	584	604	610	710	710
600	24"	610	617-633		635	642	650	660	676	692	710	720	800	800
700	28"	711	718.3		738	760	760	770	792	808			900	900
800	32"	813	819.9		842	864	864	876	900	924			1000	1000
900	36"	914	924.1		945	972	972	984	1012	1040			1200	1200
1000	40"	1016	1026.1		1048	1080	1080	1096	1124	1158			1400	1400
1100	44"	1018	1125		1152								1600	1600
1200	48"	1220	1228.8		1255									
1300	52"	1321	1331											
1400	56"	1420	1433.6		1462									
1500	60"	1524	1535.6		1565									
1600	64"	1626	1637.6		1668									
1800	72"	1829	1841.7											
2000	80"	2020	2046											
2200	88"	2232	2252											
2400	96"		2453											
2500	100"	2540												

HDPE and PVC pipes are outside diameter (OD)



HYDRO PRESSURE TEST

TEST TIME: 30 minutes

TEST PRESSURE: NOMINAL PN X 1,5



FIRE TEST

TEST TEMPERATURE: 800 C°

TEST PRESSURE: 8,5 bar

WATER TEMPERATURE: 80 C°

TEST TIME: 30 minutes

For more information contact:



OCTOPUS
ELECTRONICS

6 Ingwe Road, Sebenza, 1609

+27 (0) 11 524 0144

info@octopuse.co.za

www.octopuse.co.za



ISO 10002 - 2004
SA 8000