

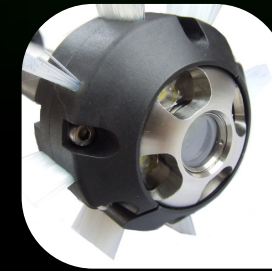
Troglotech T804 Troglprobe System

Troglotech's Troglprobe T804 Inspection System is the ultimate in ruggedness, reliability and ease of operation.

The simple, uncluttered appearance belies the features included such as integral solid-state video recording, full function text writer with meterage display, eight-hour lightweight battery pack and mini-mainline ready controller.

Coupled with Troglotech's well proven T800 Troglcam auto-uprighting forward-view HD camera and flexible configuration possibilities, Troglprobe offers a fully featured inspection product with extensive potential for expansion.

More information at:
www.troglotech.com
info@troglotech.com



contact

Troglotech Ltd

Unit 1, 3 Penns Road,
Petersfield
Hampshire,
GU32 2EW

United Kingdom

t: +44 (0)1730 711 240

f: +44 (0)1730 711 240

e: info@troglotech.com

w: www.troglotech.com

The Troglprobe T804

The T804 Troglprobe is all you need for successful and professional inspection.



troglotech

ultimate underground technology

Features and benefits

- **Supplied ready to use**
- Fast set-up. Flip up display, turn on, use.
- Complete system is fully waterproof to IP67 allowing operation in all weathers
- 8-Hour Power-Cell operation for maximum site safety and convenience.
- Flexible configuration. Can be reconfigured in seconds for flat or upright operation.
- High quality aluminium housings machined from solid and sealed to IP67.
- Extensive future upgrade path up to mini-mainline level
- Well proven camera design
- Light weight, base system only 17kg
- Integral Digital Video Recording to CF card in universal MPEG4 format.
- Simple recording controls with "one touch" record and play.
- Fully compatible with Wincan reporting software. The Troglprobe is a Wincan approved system.



what we do

troglotech ltd

We are a fast-growing but well established company. We manufacture the T804 Troglprobe, the rugged and fully portable inspection system that includes everything for reliable inspection of pipelines. The system is battery operated and includes a digital video recorder, text-writer, rod-counter and high brightness display.

The camera supplied with the Troglprobe is the T800 forward-view auto-uprighting model with thousands in use throughout the world.

Our T812 Pan and Tilt camera is the worlds first to include 'Human Perspective View'

If small-bore pipework needs inspecting, our one-inch T710 camera fits the bill

